

2021-05-12

## Efecto del extracto de hidro-metanol del tallo de *Anacardium occidentale* sobre la hematología y la bioquímica del suero en gallos jóvenes

Omeke Jacinta Ngozi

*University of Nigeria Nsukka. Enugu State, Nigeria, jacinta.omeke@unn.edu.ng*

Ugochukwu Iniobong Chukwuebuka Ikenna

*University of Nigeria Nsukka. Enugu State, Nigeria, iniobong.ugochukwu@unn.edu.ng*

Emejuo Nnenna Tochi

*University of Nigeria Nsukka. Enugu State, Nigeria, tochi.emejuo@unn.edu.ng*

Ihedioh John Ikechukwu

*University of Nigeria Nsukka. Enugu State, Nigeria, john.ihedioha@unn.edu.ng*

Anaga Aruh Ottah

*University of Nigeria Nsukka. Enugu State, Nigeria, aruh.anaga@unn.edu.ng*

*See next page for additional authors*

Follow this and additional works at: <https://ciencia.lasalle.edu.co/mv>



Part of the [Agriculture Commons](#), [Animal Sciences Commons](#), and the [Veterinary Medicine Commons](#)

---

### Citación recomendada

Jacinta Ngozi O, Chukwuebuka Ikenna UI, Nnenna Tochi E, John Ikechukwu I, Aruh Ottah A, Wilfred Sunday E y Osita Arinze OJ. Efecto del extracto de hidro-metanol del tallo de *Anacardium occidentale* sobre la hematología y la bioquímica del suero en gallos jóvenes. *Rev Med Vet.* 2021;(42): 83-92. doi: <https://doi.org/10.19052/mv.vol1.iss42.10>

This Artículo de Investigación is brought to you for free and open access by the Revistas científicas at Ciencia Unisalle. It has been accepted for inclusion in Revista de Medicina Veterinaria by an authorized editor of Ciencia Unisalle. For more information, please contact [ciencia@lasalle.edu.co](mailto:ciencia@lasalle.edu.co).

---

## Efecto del extracto de hidro-metanol del tallo de *Anacardium occidentale* sobre la hematología y la bioquímica del suero en gallos jóvenes

### Autor

Omeke Jacinta Ngozi, Ugochukwu Iniobong Chukwuebuka Ikenna, Emejuro Nnenna Tochi, Iheodion John Ikechukwu, Anaga Aruh Ottah, Ezema Wilfred Sunday, and Okoye John Osita Arinze





# Effect of hydro-methanol stem extract of *Anacardium occidentale* on haematology and serum biochemistry in cockerels

Omeke Jacinta Ngozi<sup>1</sup> / Ugochukwu Iniobong Chukwuebuka Ikenna<sup>2</sup> / Emejue Nnenna Tochi<sup>3</sup> / Ihedioha John Ikechukwu<sup>4</sup> / Anaga Aruh Ottah<sup>5</sup> / Ezema Wilfred Sunday<sup>6</sup> / Okoye John Osita Arinze<sup>7</sup>

## Abstract

This study aims to investigate the effects of orally administered graded doses of hydro-methanol stem extract from *Anacardium occidentale* (MSEAO) on the haematology and serum biochemistry of chickens. Forty, 8-weeks old cockerel chickens were randomly assigned into four groups (groups 1, 2, 3 and 4) of ten birds each. Groups 1, 2 and 3 received 3000, 1500 and 500 mg/kg body weight of MSEAO, respectively, while chickens in control group (group 4) were given drinking water placebo. Blood samples were collected from all chickens on day 0- and 48-hours post-treatment. Haematology and serum biochemistry were evaluated following standard procedures. The results showed that most of the haematological parameters in the treated groups did not differ significantly as compared to the control group. The serum biochemistry results showed that the serum alanine aminotransferase (ALT) activity in groups 1 and 2 were significantly ( $P < 0.05$ ) lower than that in groups 3 and 4. Serum uric acid levels in groups 1 and 2 chickens were significantly ( $P < 0.05$ ) lower than that in the control group, while the creatinine levels of chickens in the treated groups were significantly ( $P < 0.05$ ) lower than that of chickens in the control group. It was concluded that MSEAO, as used in the study, led to significant changes in heterophil counts, serum ALT and ALP activities, uric acid, creatinine, and calcium levels.

**Keywords:** *Anacardium occidentale*, chickens, haematology, serum biochemistry, stem extract.

- 1 DVM, M.Sc. Department of Veterinary Pathology and Microbiology. Faculty of Veterinary Medicine. University of Nigeria Nsukka. Enugu State, Nigeria. ✉ jacinta.omeke@unn.edu.ng.  <http://orcid.org/0000-0002-4034-6132>
- 2 DVM, M.Sc. Department of Veterinary Pathology and Microbiology. Faculty of Veterinary Medicine. University of Nigeria Nsukka. Enugu State, Nigeria. ✉ iniobong.ugochukwu@unn.edu.ng.  <http://orcid.org/0000-0001-7410-8311>
- 3 DVM, Department of Veterinary Pathology and Microbiology. Faculty of Veterinary Medicine. University of Nigeria Nsukka. Enugu State, Nigeria. ✉ tochi.emejue@unn.edu.ng
- 4 DVM, M.Sc, PhD. Department of Veterinary Pathology and Microbiology. Faculty of Veterinary Medicine. University of Nigeria Nsukka. Enugu State, Nigeria. ✉ john.ihedioha@unn.edu.ng.  <http://orcid.org/0000-0002-0780-7531>
- 5 DVM, M.Sc, PhD. Department of Veterinary Physiology and Pharmacology. Faculty of Veterinary Medicine. University of Nigeria Nsukka. Enugu State, Nigeria. ✉ aruh.anaga@unn.edu.ng.  <http://orcid.org/0000-0002-9820-8955>

**How to cite this article:** Ngozi OJ, Chukwueba-Ikenna UI, Nnenna-Tochi E, Ikechukwu IJ, Aruh-Ottah, A, Wilfred-Sunday E, Osita-Arinze OJ. Effect of hydro-methanol stem extract of *Anacardium occidentale* on hematology and serum biochemistry in cockerels. Rev Med Vet. 2021;(42):83-92. <https://doi.org/10.19052/mv.vol1.iss42.10>

## Efecto del extracto de hidro-metanol del tallo de *Anacardium occidentale* sobre la hematología y la bioquímica del suero en gallos jóvenes

### Resumen

El objetivo de este estudio es investigar los efectos de dosis graduales de extracto de hidro-metanol del tallo de *Anacardium occidentale* (MSEAO) administradas por vía oral sobre la hematología y bioquímica del suero de polluelos. Cuarenta pollos de 8 semanas de edad fueron asignados al azar en cuatro grupos (1, 2, 3 y 4) de diez pollos cada grupo. Los grupos 1, 2 y 3 recibieron 3000, 1500 y 500 mg/kg de peso corporal de MSEAO, respectivamente, mientras que a los pollos del grupo de control [grupo 4] se les dio agua de beber como placebo. Se tomaron muestras de sangre de todos los pollos a las 0 y 48 horas después del tratamiento. Se evaluó la hematología y la bioquímica del suero siguiendo procedimientos estándares. Los resultados mostraron que la mayoría de parámetros he-

- 6 DVM, M.Sc, PhD. Department of Veterinary Pathology and Microbiology. Faculty of Veterinary Medicine. University of Nigeria Nsukka. Enugu State, Nigeria.  
✉ wilfred.ezema@unn.edu.ng  
📄 <http://orcid.org/0000.0002-4942-7721>
- 7 DVM, M.Sc, PhD. Department of Veterinary Pathology and Microbiology. Faculty of Veterinary Medicine. University of Nigeria Nsukka. Enugu State, Nigeria.  
✉ okoyejoa@yahoo.com  
📄 <http://orcid.org/0000-0003-2137-3626>

matológicos en los grupos tratados no difirieron significativamente con respecto al grupo de control. Los resultados de la bioquímica del suero mostraron que la actividad de la alanina aminotransferasa en el suero (ALT) en los grupos 1 y 2 fue significativamente inferior ( $P < 0.05$ ) a la de los grupos 3 y 4. Los niveles de ácido úrico en el suero en los pollos de los grupos 1 y 2 fueron significativamente inferiores ( $P < 0.05$ ) a los del grupo de control, mientras que los niveles de creatinina de los pollos en los grupos de tratamiento fueron significativamente inferiores ( $P < 0.05$ ) a los de los pollos del grupo de control. Se concluyó que el MSEAO, como se usó en este estudio, produjo cambios significativos en los conteos de heterófilos, en las actividades de ALT y ALP del suero y en los niveles de ácido úrico, creatinina y calcio.

**Palabras clave:** *Anacardium occidentale*, pollos, hematología, bioquímica del suero, extracto del tallo

## INTRODUCTION

Poultry production in both developed and developing countries such as Nigeria is being hampered by the expensive cost of feed and drugs used in the therapeutic treatment of diseases (1). These reasons forced researchers to divert their attention to non-conventional feed and drug sources. In Enugu State, Southeast, Nigeria, cashew stem is being used as a chewing stick for the treatment of cough and for clearing the congested throat.

Medicinal plants are known to be a significant source of new chemical substances with potential therapeutic effects; therefore, interest in medicinal plants has become increasingly stronger in recent times with great emphasis on their potential therapeutic effects both on humans and animals (2,3). Evaluation of harmlessness or danger caused by substances such as pharmaceuticals and natural products prior to their use is very important and must be undertaken (2). Laboratory studies on blood profile are an important device that aid in detecting any abnormal change (4), especially when a new substance is introduced into the body system.

The medicinal use of *Anacardium occidentale* (AO) plant has been observed worldwide. *Anacardium occidentale* belongs to the family Anacardiaceae. It is popularly known as cashew tree and originated from Brazil.

The Anacardiaceae family consists of several plants with a lot of pharmacological activities. Out of these plants, AO has been reported to have great pharmacological and therapeutic activities (5). *Anacardium occidentale* tree has been known as a multipurpose tree whose leaf, stem and bark extracts are broadly used for treatment of different diseases (6,7,8). Early researchers have shown that AO possesses Phyto-constituents such as saponins, tannins, among others, which have been known to have antioxidant activities (6,9). It has been established that AO can be used in treatment of many ailments such as tumours, venereal diseases, warts, and nasal congestion (7,10).

Hematologic and serum biochemistry parameters are then used to evaluate the systemic relationship and physiological changes in the body of animals exposed to toxicants and stresses due to environmental factors (11,12). The integrity of the hepatocellular membrane, skeletal, smooth, and cardiac muscle fibres when compromised, will lead to discharges of the marker enzymes into the blood (13,14).

In our earlier work, *Anacardium occidentale* stem extract has been established to be relatively safe in *in-vitro* and *in-vivo* models (15); however, its effects in hematologic and serum biochemistry have not been investigated. Hence, the present study evaluates the hematologic and serum biochemical changes in cockerels administered with graded acute oral doses of stem extract from AO.

## MATERIALS AND METHODS

### Collection and identification of *Anacardium occidentale*

The AO stem was collected from a Nguru cashew plantation in the Nsukka Local Government Area, Enugu State of Southeast Nigeria, in January 2018. It was identified and authenticated by a plant taxonomist at the Department of Plant Science and Biotechnology, University of Nigeria Nsukka and the voucher sample was provided/kept (UNN|H.AO|2018.1).

### Preparation and extraction of the plant

The AO stem was dried in the shade in World Bank Assisted STEP B Drug Discovery laboratory, at the Department of Veterinary Physiology and Pharmacology, UNN. Dried specimens were pulverized using a hammer mill at the Department of Crop Science, UNN. The pulverized material was extracted using cold maceration by soaking 500 grams in 3 litres of 70 % hydro-methanol for 48 hours. The extract was filtered using Whatmann filter paper n.º 1 and concentrated with hot air oven (Gallenkamp) at 40 °C. The crude extract was weighed to determine the percentage yield. The hydro-methanol stem extract from AO was stored in a refrigerator at 4 °C before its use. Reconstitution of the extract was done using distilled water. The brine shrimp lethality and acute toxicity test of stem extract was done using standard procedures as described by Omeke et al. (15).

### Experimental Birds

Forty-day-old cockerels were procured from Zartech Hatchery Ibadan, Oyo State, Southwest Nigeria for this experiment and were bred for two weeks keeping the biosecurity measures. Feed (Top Starter and Grower Feed®, Premier Feeds Company Ltd, Ibadan, Nigeria) and water were supplied *ad libitum*.

## Experimental Design

At eight weeks of age, the birds were randomly assigned into four groups (1, 2, 3 and 4) with 10 birds each. The extract was administered orally in graded doses of 3000, 1500 and 500 mg/kg body weight (bw) to groups 1, 2 and 3, respectively. Group 4 (control) received drinking water (10 mg/kg). They were monitored for 48 h post-treatment. The birds were weighed before starting the experiment (before treatment) and 48 h post-treatment, and a week post-administration (PA).

## Haematology

### Collection of Blood Samples

Blood samples (1 ml) were collected from five birds through wing vein prior to treatment (day 0). Forty-eight hours after administering the extract, one millilitre of blood sample was randomly collected from five birds for haematology into sterile sample bottles containing ethylenediaminetetraacetic acid (EDTA). Packed cell volume (PCV) was determined by the microhematocrit method (16,17). The haemoglobin concentration (HbC) was determined by the cyanmethemoglobin procedure (18,19) with an automated blood biochemistry analyser (Wuxi Hiwell Diatek Instruments Co. Ltd, Wuxi, China). Red blood cell (RBC) and total white blood cell (TWBC) counts were done by the haemocytometer method (20,21,22). Differential leucocytes count (DLC) was determined using the Leishman technique (21,22).

### Serum Biochemistry

Two millilitres of blood were randomly collected from five birds into plain sample bottles for serum biochemistry. At each collection, the blood samples could clot for 45 minutes and centrifuged at 3000 revolutions per minute. The serum supernatant was carefully aspirated and transferred to Eppendorf tubes (1.5 ml capacity) and used immediately for the biochemical analysis.

The serum alanine aminotransferase (ALT) and aspartate aminotransferase (AST) activities were assayed based on the Reitman-Frankel colorimetric method (23,24), using commercially available ALT and AST test kit sourced from Química Clínica Aplicada (QCA, Spain). The serum alkaline phosphatase (ALP) activity was determined by the phenolphthalein monophosphate method (24, 25), using the ALP test kit (QCA, Spain). Cholesterol was determined by enzymatic colorimetric test (Chop-Pap) procedure (26). Serum total protein levels were assayed by direct Biuret method (31), while the serum albumin level was determined based on the bromocresol green method (27,28), using total protein and albumin test kits (QCA, Spain), respectively. Serum globulin was also assayed (27). The serum calcium levels were determined by the ortho-cresol phthalein method (29), while the serum phosphorus determination was done following Fiske-Subba Row procedure (30,31), using the calcium and phosphorus test kits (QCA, Spain), respectively. Serum uric acid levels were also assayed (32), using the uric acid test kit (Dialab, Austria), while the serum creatinine was determined by the modified Jaffe method (33).

### Gross Pathology and Histopathology

At the termination of the experiment, three birds from a group were humanely sacrificed through cervical dis-

location for gross and histopathological examination. Spleen, liver, and Bursa of Fabricius samples were collected. They were specifically examined for atrophy, enlargement, or presence of ulceration. They were fixed in 10 % buffered formalin for not less than 24 hours. The histopathology was done as described by Drury and Wallington (34). The slides were stained with haematoxylin and eosin stains. Photo-microscopic pictures were taken using 3.2 moticam.

### Statistical Analysis

Data collected were presented as mean  $\pm$  standard error of the mean (SEM) and analysed using one-way analysis of variance (ANOVA). The variant means were separated using Duncan Multiple Range Test (DMRT). Level of significance was accepted at  $P < 0.05$ .

### RESULTS

Plant extraction and acute toxicity of MSEAO: The extraction yielded 5.30 % w/w solid material. The birds in all the groups did not show any clinical signs of abnormality post-administration of the extract. There was no significant ( $P > 0.05$ ) variation between the mean body weight of the extract-treated groups and the birds that received distilled water (control). See Table 1.

Table 1. Mean body weight of birds (g) administered with graded doses of hydro-methanol stem extract from *Anacardium occidentale* (MSEAO)

Days weighed	Mean body weight $\pm$ Standard error of the mean			
	Group A (3000 mg/kg)	Group B (1500 mg/kg)	Group C (500 mg /kg)	Group D (control)
Day 0	454.00 $\pm$ 36.47	394.00 $\pm$ 71.97	428.00 $\pm$ 84.68	520.00 $\pm$ 135.09
48 h PA	710.00 $\pm$ 89.44	610.00 $\pm$ 96.18	640.00 $\pm$ 138.74	622.00 $\pm$ 119.87
One Week PA	744.00 $\pm$ 100.90	690.00 $\pm$ 74.16	740.00 $\pm$ 143.18	620.00 $\pm$ 130.58

There was no significant difference in body weight among the groups.

PA= Post-administration

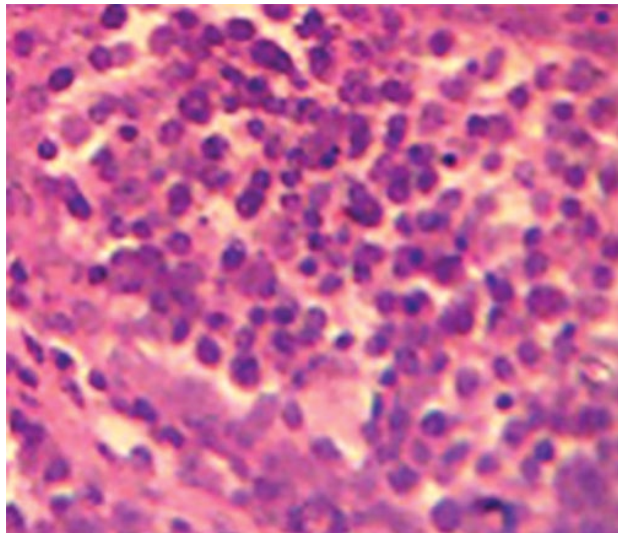
Source: own work

**Effect of MSEAO on vital organs.** Gross and histopathological examinations showed no significant ( $P > 0.05$ ) lesions in the vital tissues (Bursa of Fabricius and spleen) examined as compared to the control group. See Figures 1 and 2.

**Effect of MSEAO on haematology.** There is no significant difference in PCV, RBC, HBC, and total WBC in all three treated groups as compared to group 4 (control). This is shown in Table 2. The heterophil count was significantly ( $P < 0.05$ ) higher in chickens in groups 1 and 3 than those in group 2. The results of monocyte and eosinophil counts showed no significant ( $P > 0.05$ ) variation across the groups.

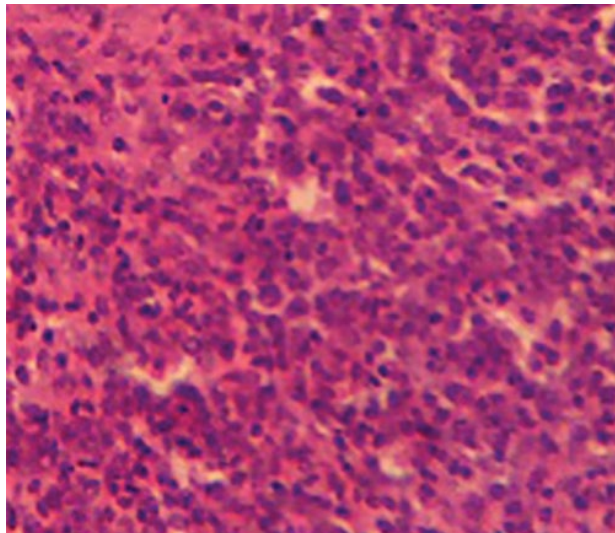
**Effect of MSEAO on serum biochemistry.** Serum AST activity did not vary significantly ( $P > 0.05$ ) among all the groups, while the serum ALT activity was significantly ( $P < 0.05$ ) lower in chickens in groups 1 and 2 as compared to those in groups 3 and 4. This is shown in Table 3. The effect on serum total protein, albumin, and globulin showed no significant ( $P > 0.05$ ) variations among all the groups. Serum total cholesterol and triglyceride level were lower in all the groups administered the extract when compared to the control group. The serum uric acid and creatinine levels were significantly ( $P < 0.05$ ) lower across all the treatment groups as compared to the control group (Table 3). Serum calcium level was significantly ( $P < 0.05$ ) lower in groups 2 and 3 as compared to groups 1 and 4. There was a significant ( $p < 0.05$ ) decrease in the levels of serum uric acid and creatinine in all the treated groups.

Figure 1. Bursa of Fabricius showing no obvious lesions 48 h post-administration. H&E X 400.



Source: own work

Figure 2. Spleen of chicken in group 1 showing no obvious lesions 48 h post-administration. H&E x 200.



Source: own work

Table 2. Haematological values of chicken administered with varied doses of *Anacardium occidentale* stem extract

Mean values, with standard error of the mean in brackets				
Haematological Parameters	Group 1 (3000 mg/kg)	Group 2 (1500 mg/kg)	Group 3 (500 mg/kg)	Group 4 (control)
Packed Cell Volume (%)	29.00 (0.58)	30.00 (1.32)	29.17 (0.93)	28.69 (1.21)
Haemoglobin concentration(g/dl)	8.74 (0.17)	8.93 (0.22)	8.70 (0.20)	8.69 (0.29)
Red Blood Cell count ( $10^6/\mu\text{l}$ )	3.89 (0.18)	4.02 (0.16)	3.87 (0.18)	3.68 (0.27)
Total White Blood Cell ( $10^3/\mu\text{l}$ )	102.83 (14.62)	108.33 (7.65)	120.50 (13.19)	105.64 (10.48)
Lymphocyte counts ( $10^3/\mu\text{l}$ )	45.72 (7.17)	66.99 (4.17)	56.11 (9.53)	53.21 (7.02)
Heterophil counts ( $10^3/\mu\text{l}$ )	42.56 <sup>a</sup> (8.26)	20.09 <sup>b</sup> (5.76)	40.16 <sup>a</sup> (4.80)	27.42 <sup>ab</sup> (2.98)
Monocyte counts ( $10^3/\mu\text{l}$ )	12.50 (2.51)	19.77 (3.00)	18.04 (5.32)	18.01 (4.96)
Eosinophil counts ( $10^3/\mu\text{l}$ )	2.06 (0.35)	1.09 (0.08)	3.61 (2.53)	2.68 (0.29)

<sup>abc</sup> Alphabetical superscripts in a row indicate significant differences between the means of the groups,  $P < 0.05$ .

Source: own work

Table 3. Changes in serum biochemistry parameters in chickens administered with graded doses of hydro-methanol stem extract from *Anarcadia occidentale* (MSEAO)

Mean values, with standard error of the mean in brackets				
Serum Biochemistry Parameters	Group 1 (3000 mg/kg)	Group 2 (1500 mg/kg)	Group 3 (500 mg/kg)	Group 4 (control)
Aspartate aminotransferase (IU/L)	87.27 (1.96)	86.90 (3.24)	87.16 (1.82)	91.89 (2.14)
Alanine aminotransferase (IU/L)	7.71 <sup>a</sup> (0.39)	7.22 <sup>a</sup> (0.25)	10.92 <sup>b</sup> (1.24)	9.81 <sup>ab</sup> (0.79)
Alkaline phosphatase (IU/L)	544.41 <sup>a</sup> (1.02)	535.44 <sup>b</sup> (2.46)	551.25 <sup>c</sup> (1.54)	540.04 <sup>ab</sup> (1.81)
Total proteins (g/dl)	3.94 (0.08)	4.00 (0.04)	4.12 (0.12)	4.01 (0.09)
Albumin (g/dl)	2.32 (0.04)	2.38 (0.05)	2.40 (0.02)	2.30 (0.07)
Globulin (g/dl)	1.63 (0.11)	1.62 (0.08)	1.70 (0.14)	1.72 (0.13)
Total Cholesterol (mg/dl)	118.76 (7.68)	114.57 (8.33)	117.52 (4.83)	124.54 (3.41)
Triglyceride (mg/dl)	87.99 (6.45)	95.92 (3.97)	90.30 (4.22)	99.68 (4.83)
Uric acid (mg/dl)	5.86 <sup>a</sup> (0.78)	6.02 <sup>a</sup> (0.30)	6.70 <sup>ab</sup> (0.08)	8.31 <sup>b</sup> (0.68)



Mean values, with standard error of the mean in brackets				
Serum Biochemistry Parameters	Group 1 (3000 mg/kg)	Group 2 (1500 mg/kg)	Group 3 (500 mg/kg)	Group 4 (control)
Creatinine (mg/dl)	0.30 <sup>a</sup> (0.009)	0.29 <sup>a</sup> (0.12)	0.28 <sup>a</sup> (0.152)	0.36 <sup>b</sup> (0.019)
Calcium (mg/dl)	9.75 <sup>ab</sup> (0.24)	9.10 <sup>b</sup> (0.23)	9.25 <sup>b</sup> (0.20)	10.08 <sup>a</sup> (0.29)
Phosphorus (mg/dl)	4.40 (0.14)	4.30 (0.12)	4.64 (0.16)	4.24 (0.16)

<sup>a,b</sup> Alphabetical superscripts in a row indicate significant differences between the means of the groups,  $P < 0.05$ .

Source: own work

## DISCUSSION

The effect of hydro-methanol stem extract from *A. occidentale* on haematology and serum biochemistry in cockerels was investigated using standard procedures. No obvious gross and histopathological findings herein disagree with the results by Tédonget al. (35) and Omorodion et al. (3), who reported histopathological lesions in the liver.

Heterophils equivalents of mammalian neutrophils are critical to the immune defence of birds. Since MSEAO enhanced the level of heterophils in this study, it could boost the body defence system of birds. The significantly higher heterophil in chickens in groups 1 and 3 imply that the extract administered at these doses may be useful in the treatment and management of bacterial infections. This observation agrees with the reports by Baptiste et al. (36). ALT is a good parameter used in assessing the liver status in animals; the result of low ALT levels in the chickens in two groups that received the lower doses shows that the extract at these doses had a hepatocyte membrane-stabilizing effect and thus can be hepatoprotective in disorders and diseases associated with breaches in hepatocyte integrity (37,38). The stem extract from *A. occidentale* did not caused a significant effect on serum total protein, albumin and globulin in all treated groups, an indication that the extract had no effect on protein synthesis in chickens.

Serum total cholesterol and triglyceride level were lower across all the groups administered with MSEAO. These results suggest that the extract had a hypolipidemic effect. It also implies that the extract can be used to treat ailments associated with derangement in serum lipid profile. These observations support the findings by Olatunji et al. (39). Serum uric acid and creatinine levels are parameters used in the determination of the status and the functional integrity of the kidneys (40).

Elevated levels of these parameters indicate kidney damage and disease, and a decrease suggests protection. Since MSEAO significantly lowers the levels of serum uric acid and creatinine, it suggests that the stem extract may have a kidney protective effect. Renal diseases have been shown to be common in avian species (41); therefore, the significant lower levels of uric acid and creatinine in all three treated groups implies that the stem extract from AO may be important in the management of diseases that affect the kidney function. Calcium and phosphorus are important nutrients in poultry diet formulations, especially for bone formation and as enzyme cofactors (42, 43). In addition, calcium is essential to blood coagulation, eggshell formation, and muscle and nerve functions (42). Calcium and phosphorus homeostasis are largely under endocrine control —parathormone and hormonal form of Vitamin D3. In this study, MSEAO (500 and 1500 mg/kg) depleted serum calcium levels and enhanced phosphorus levels, which may adversely affect the functions.

In conclusion, the hydro-methanol stem extract from *A. occidentale* exhibited elevation of heterophils (improved immune system), reduced liver marker enzyme (hepatoprotection), hypolipidemic and kidney protective effects. However, the extract may affect the roles of calcium and phosphorus in chickens.

## ACKNOWLEDGEMENTS

We are grateful to technical staff of Department of Veterinary Physiology and Pharmacology and Veterinary Pathology and Microbiology, UNN, for their expert technical help and advice.

## Competing interest

The authors declare that they have no conflict of interest.

## Ethical approval

The principles governing the humane use and conduct of experiments with animals were strictly observed during this study, and the experimental protocol was approved by the Institutional Animal Care and Use Committee of the Faculty of Veterinary Medicine (IACUC, FVM), with Approval Reference Number: FVM-UNN. IACUC-2019-0446.

## Funding

This research received no specific grant from any funding agency in the public, commercial, or non-for-profit sectors.

## REFERENCES

1. Heise H, Crisan A, Theuvsen L. The Poultry Market in Nigeria: Market structures and potential for investment in the market. *International Food and Agribusiness Management Review*. 2015;18(Special Issue A): 197-221.
2. Fawzi M. Traditional medicines in Africa: an appraisal of ten potent African medicinal plants. *Evidence-Based Complementary and Alternative Medicine*. 2013; Special Issue. <http://dx.doi.org/10.1155/2013/617459>
3. Omorodion NT, Iyare GI, Eramah TO, Achukwu PU, Ogochukwu AG. The effects of *Anacardium occidentale* leave extract on histology of selected organs of Wistar rats. *MOJ Biol Med*. 2017;2(2):216-21. <https://doi.org/10.15406/mojbm.2017.02.00046>
4. Tijani LA, Akanji AM, Agbalaya K, Onigemo M. Haematological and serum biochemical profiles of broiler chickens fed diets containing moringa leaf meals. *Journal of Tropical Agriculture, Food, Environment and Extension*, 2015;14(3),7-11.
5. Aiswarya G, Reza KH, Radhika G, Rahul V, Sidhaye RV. Study for anthelmintic activity of cashew apple (*Anacardium occidentale*) extract. *International Journal of Pharmaceutical Sciences Review and Research*. 2011;6(1):44-7.
6. Jaiswal YS, Tatke PA, Gabhe SY, Vaidya A. Antioxidant activity of various extracts of leaves of *Anacardium occidentale* (cashew) *Research Journal of Pharmaceutical Biological Chemical Science*. 2010;1(4):112-9.
7. Arekemase MO, Oyeyiola GP, Aliyu MB. Antibacterial activity of *Anacardium occidentale* on some enterotoxin producing bacteria. *International Journal of Biology*. 2011;3(4):392-9. <https://doi.org/10.5539/ijb.v3n4p92>
8. Souza NC, Medeiros J, Da Silva M, Oliveira R, Medeiros MS, Da Silva C, et al. Antioxidant and anti-inflammatory properties of *Anacardium occidentale* leaf extract. *Evidence-based Complementary and Alternative Medicine*. 2017; 2787308. <https://doi.org/10.1155/2017/2787308>
9. Ojezele MO, Agunbiade S. Phytochemical constituents and medicinal properties of different extracts of *Anacardium occidentale* and *Pisidium guajava*. *Asian Journal of Biomedical and Pharmaceutical Science*. 2013;3(16):20-3.
10. Agedah CE, Bawo, DDS, Nyananyo BL. Identification of antimicrobial properties of cashew. *Anacardium occidentale* L. (family Anacardiaceae). *Int J Appl Manag Sci*. 2010;14(3):25-7. <https://doi.org/10.4314/jasem.v14i3.61455>

11. Afolabi KD, Akinsoyinu AO, Olajide R, Akinleye SB. Haematological parameters of the Nigerian local grower chickens fed varying dietary levels of palm kernel cake. Proceeding of the 35th Annual Conference of Nigerian Society for Animal Production, Ibadan; 2010. p. 247.
12. Saulawa LA, Ukachukwu SU, Onwudike OC, Garba MG, Aruwayo A. Effect of quantitative replacement of baobab (*Adansoniadigitata*) seed meal for soya beans meal in broiler finisher diet. ASAN-NIAS Joint Annual Conference, Abuja, Nigeria; 2012. p. 525-528.
13. Hsueh CJ, Wang JH, Dai L, Liu CC. Determination of alanine aminotransferase with an electrochemical nanoir-C biosensor for the screening of liver diseases. *Biosensors*. 2011;1(3):107-17. <https://doi.org/10.3390/bios1030107>
14. Oche O, Sani I, Chilaka NG, Samuel NU, Samuel A. Pancreatic islet regeneration and some liver biochemical parameters of leaf extracts of *Vitex doniana* in normal and streptozotocin-induced diabetic albino rats. *Asian Pac J Trop Biomed*. 2014;4(2):124-30. [https://doi.org/10.1016/S2221-1691\(14\)60220-3](https://doi.org/10.1016/S2221-1691(14)60220-3)
15. Omeke JN, Anaga AO, Okoye JOA. Brine shrimp lethality and acute toxicity tests of different hydro-methanol extracts of *Anacardium occidentale* using in vitro and in vivo models: a preliminary study. *Comp Clin Pathol*. 2018; 27:1717-21. <https://doi.org/10.1007/s00580-018-2798-y>
16. Benjamin MM. Outline of Veterinary Clinical Pathology, (3<sup>rd</sup> ed.). Iowa State University Press; 1981.
17. Thrall MA, Weiser MG. Haematology. In: Hendrix CM, editor, Laboratory procedures for veterinary technicians, 4th Edition. Missouri: Mosby Incorporated; 2002.
18. Kachmar JF. Determination of haemoglobin by the cyanmethemoglobin procedure. In: Tietz NW, editor, Fundamentals of clinical Chemistry. Philadelphia: W. B. Sanders Company; 1970.
19. Higgins T, Beutler E, Doumas BT. Hemoglobin, Iron and Bilirubin. In: CA, Burtis ER, Ashwood DE, Bruns (editors), Tietz Fundamentals of Clinical Chemistry, 6th Edition. Missouri: Elsevier; 2008. p. 514-515.
20. Schalm OW, Jain NC, Carroll EJ. Veterinary Hematology; 3rd Edition. Philadelphia: Lea and Febiger).
21. Campbell TW, Coles EH. Avian clinical pathology. In: Coles EH, editor, Veterinary Clinical Pathology, 4th ed. Philadelphia: W. B. Sanders Company; 1986. p. 279-296.
22. Campbell TW. Haematology. In: Ritchie BW, Harrison GJ, Harrison LR, editors, Avian Medicine: Principles and application. Brentwood, Tennessee: Harrison's Bird Foods; 1994. p. 176-198.
23. Reitman S, Frankel S. A Colorimetric method for determination of serum glutamic oxaloacetic and glutamic pyruvic transaminases. *Am J Clin Pathol*. 1957;28(1):56-63. <https://doi.org/10.1093/ajcp/28.1.56>
24. Colville J. Blood Chemistry. In: Hendrix CM, editor, Laboratory procedures for veterinary technicians, 4th edition. Missouri: Elsevier; 2002. p. 75-103.
25. Babeson AL, Greeley SJ, Coleman CM, Philips GE. Phenolphthalein monophosphate as a substrate for serum alkaline phosphatase. *Clinical Chemistry*. 1966;12(18), 482-90. <https://doi.org/10.1093/clinchem/12.8.482>
26. Allain CC, Poon LS, Chan CS, Richmond W, Fu PC. Enzymatic determination of total cholesterol, *Clinical Chemistry*. 1974;20(4): 470-5. <https://doi.org/10.1093/clinchem/20.4.470>
27. Johnson AM. Amino acid and proteins. In: Burtis CA, Ashwood, ER, Bruns DE editors, Tietz fundamentals of clinical chemistry, 6th edition. Missouri: Elsevier; 2008. p. 206-316.
28. Doumas BT, Watson WA, Biggs HG. Albumin standard and the measurement of serum albumin with bromocresol green. *Clinica Chimica Acta*. 2008;31(1):87-96. [https://doi.org/10.1016/0009-8981\(71\)90365-2](https://doi.org/10.1016/0009-8981(71)90365-2)
29. Kessler G and Wolfman M. O- cresol phthalein direct method for in vivo determination of calcium in serum, plasma, and urine. *Clinical Chemistry*. 1964;10(8): 686-704. <https://doi.org/10.1093/clinchem/10.8.686>
30. Fiske CH, Subba Row Y. The colorimetric determination of phosphorus. *Journal of Biological Chemistry*. 1925;66(2): 373-400. [https://doi.org/10.1016/S0021-9258\(18\)84756-1](https://doi.org/10.1016/S0021-9258(18)84756-1)
31. Goodwin JF. Quantification of serum inorganic phosphorus, phosphatase and urinary phosphate without

- preliminary treatment, *Clinical chemistry*. 1970;16(9): 776-780. <https://doi.org/10.1093/clinchem/16.9.776>
32. Fossati P, Principe L, Berti G. Use of 3, 5-dichloro-2-hydroxybenzenesulfonic acid/4-aminophenazone chromogenic system in direct enzymic assay of uric acid in serum and urine. *Clinical Chemistry*, 1980;26(2):227-31. <https://doi.org/10.1093/clinchem/26.2.227>
  33. Blass KG, Thebert RJ and Lam LK. A study of the mechanism of the Jaffe reaction. *Journal of clinical chemistry and clinical Biochemistry*, 1974;12(7):336-43. <https://doi.org/10.1515/cclm.1974.12.7.336>
  34. Drury RAB and Wellington EA. Preparation of tissues for microtomy. In: Carleton's *Histological Technique*, 4th Ed. New York: Oxford University press; 1976. p. 33-114.
  35. Tédong L, Dzeufiet PD, Dimo T, Asongalem EA, Sokeng SN, Flejou JF, Kamtchouing P. Acute and sub-chronic toxicity of *Anacardium occidentale* Linn (Anacardiaceae) leaves hexane extract in mice. *Afr J Tradit Complement Altern Med*. 2006;4(2): 1407. <https://doi.org/10.4314/ajtcam.v4i2.31194>
  36. Isaac LJ, Abah G, Akpan B, Ekaette IU. Haematological properties of different breeds and sexes of rabbits. *Proceedings of the 18th Annual Conference of Animal Science Association of Nigeria*. Abuja, Nigeria: Animal Science Association of Nigeria; 2013. p. 24-7.
  37. Baptista A, Gonçalves RV, Bressan J, Pelúzio MDCG. Antioxidant and antimicrobial activities of crude extracts and fractions of cashew (*Anacardium occidentale* L.), Cajui (*Anacardium microcarpum*), and Pequi (*Caryocar brasiliense* C.): A systematic review. *Oxid Med Cell Longev*. 2018;2018:3753562. <https://doi.org/10.1155/2018/3753562>
  38. Ozer J, Ratweb M, Shawe M, Vanhaelea-Fastre R, Declercq JP, Van Meerse M. The current state of serum biomarker of hepatotoxicity. *Toxicity*, 2008;245(3): 194-205. <https://doi.org/10.1016/j.tox.2007.11.021>
  39. Ramaiah SK. Preclinical safety assessment: current gaps, challenges and approaches in identifying translatable biomarkers of drug induced liver damage. *Clinics in Laboratory Medicine*, 2011;31(1):161-72. <https://doi.org/10.1016/j.cll.2010.10.004>
  40. Olatunji LA, Okwusidi JI, Soladoye AO. Antidiabetic effect of *Anacardium occidentale* stem-bark in fructose-diabetic rats, *Pharmaceutical Biology*. 2005; 43(7): 589-93. <https://doi.org/10.1080/13880200500301712>
  41. Sirois M. *Laboratory procedures for Veterinary Technicians*. 2015;6<sup>th</sup> ed., (Mosby Inc).
  42. Echols MS. Evaluating and treating the kidneys. In: Harrison GL, y Lightfoot TL, editors, *Clinical Avian Medicine*, Vol. II. Palm Beach: Spix Publishing; 2006. p. 451-491.
  43. Klasing KC. *Comparative avian nutrition* (Wallingford, UK: CAB International; 1998.
  44. Li X, Zhang D, Yang TY, Bryden WL. Phosphorus bioavailability: a key aspect for conserving this critical animal feed with reference to broiler nutrition. *Agriculture*. 2016;6(2): 25. <https://doi.org/10.3390/agriculture6020025>